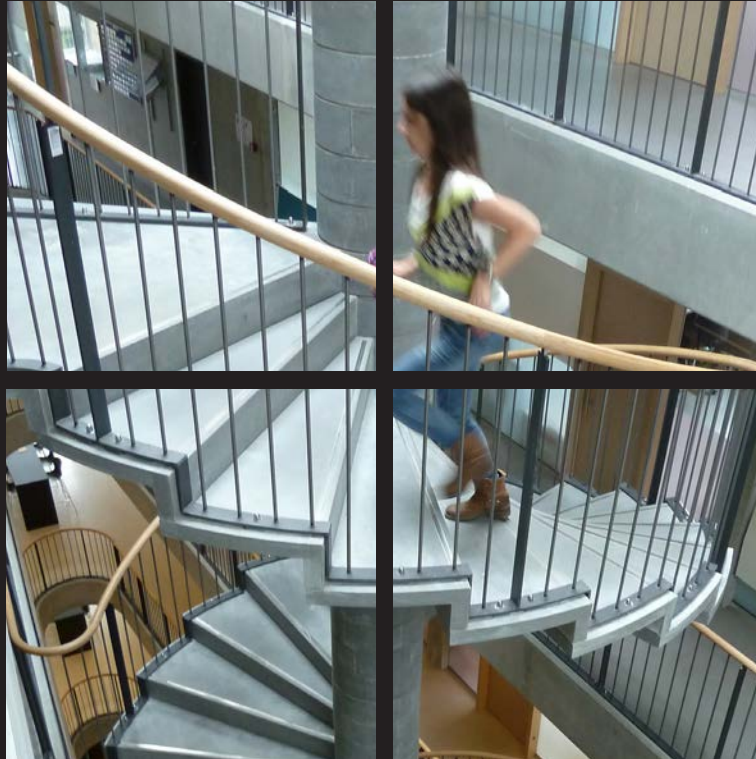


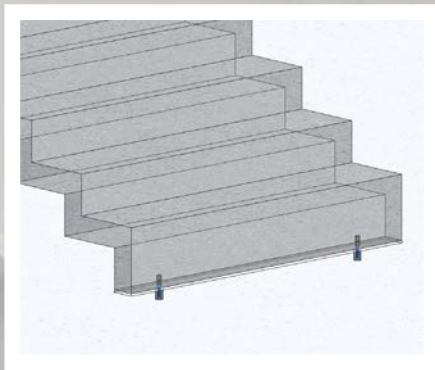
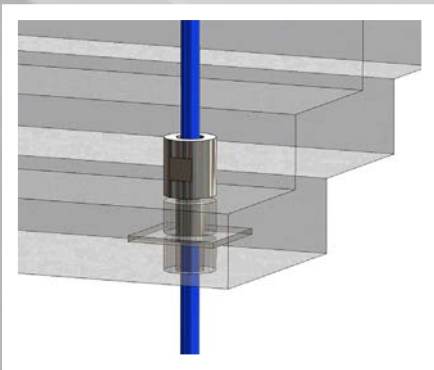
STAIRCASES

in ultra high performance concrete



HiCON

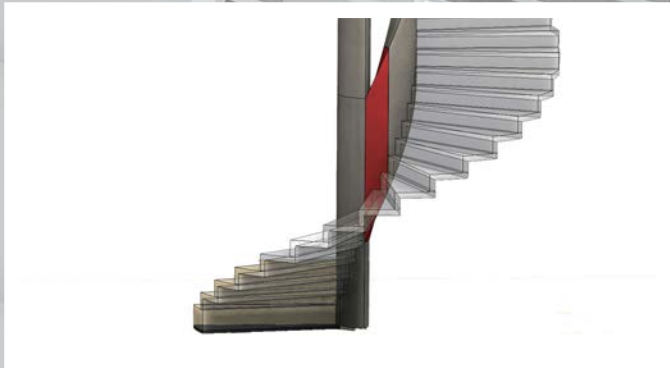
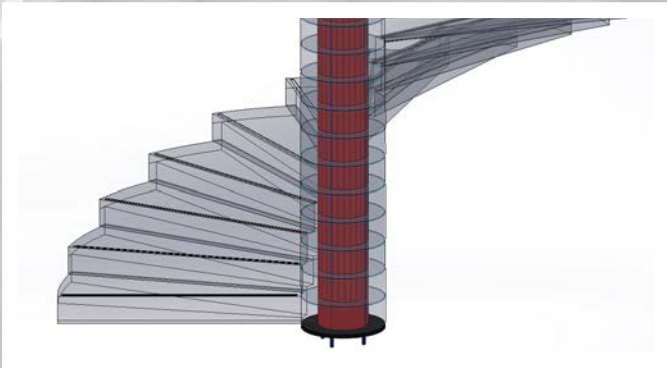
HIGH PERFORMANCE CONCRETE



ACCORDIONSTAIRCASES

An accordion staircase is a self-supporting staircase solution. If a solution with extra-long spans is needed, a beam is sometimes required to support the stairs in an integrated and elegant way. The steps can measure down to 50 mm thickness, they have a long durability and, like all our staircases, each accordion staircase is bespoke.

A Hi-Con CRC i2® accordion staircase is a simple staircase, with a light and elegant expression that is easy to install.



CIRCULAR STAIRCASES

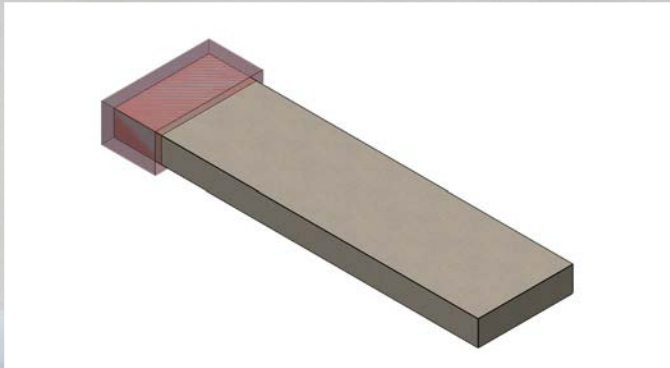
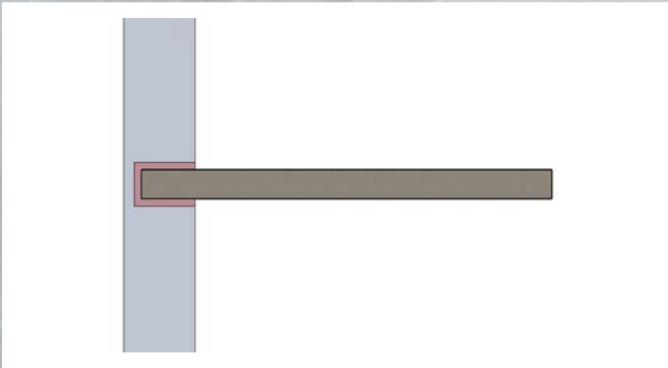
Circular staircases are characterized by their elegant, slender and twisting design. Whether the solution becomes a spiral or a winding staircase, we can cast the steps with a thickness of only 50 mm.

SPIRAL STAIRCASES

The spiral staircase is characterized in that it revolves around a centrally located column. When the individual steps are stacked, they form a spiral, which is subsequently reinforced and cast. The spiral then becomes the supporting element and acts as the column around which the steps twist.

WINDING STAIRCASES

A winding staircase is characterized by the opening in the centre of the stairs. A winding staircase is not supported by a centrally placed column, but instead by an internal beam. A winding staircase often requires more space and comes in many elements that are assembled on-site with CRC i2® JointCast.



LOOSESTEPS

When you use Hi-Con's loose steps in your staircase solution, you can easily and elegantly design a staircase with a sleek and simple expression. Our CRC i2® loose steps are light-weight elements that are simply mounted on walls or beams. The length, width and risers can vary from project to project, just as the loose steps can be supplied with different surfaces.



CUSTOMSTAIRCASES

Custom staircases is a staircase solution that is not one of the types of stairs mentioned earlier, and where an extraordinary solution is required. This may be the case where there is a need to develop a new installation principle, where there is a need to combine several different types of stairs, where there is a need to use new shapes or colours or something else entirely. No challenge is too great - at Hi-Con we like a challenge, and we would love to help make your dream come true.